



# Sommary

- Biography
- Childhood
- Education
- A famous writer
- *Travels with a donkey in the Cévennes*
- Monastier sur Gazeille
- GR 70 / Le chemin de Stevenson
- References

# Biography

Robert Louis Stevenson was born on 13th November 1850 in a rich family in Edinburgh and died on 3rd December 1894 in Vallima.



# Childhood

During his childhood, Robert Stevenson suffered from bad health. He had lung problems, that is why he decided to go and live in warm places.



# Education

His education was always interrupted by his diseases and when he was at school, he didn't manage to have good relationship with the other children. Later, he tried to study to become an engineer but his health stopped him and he tried to study law, but he never became a lawyer.

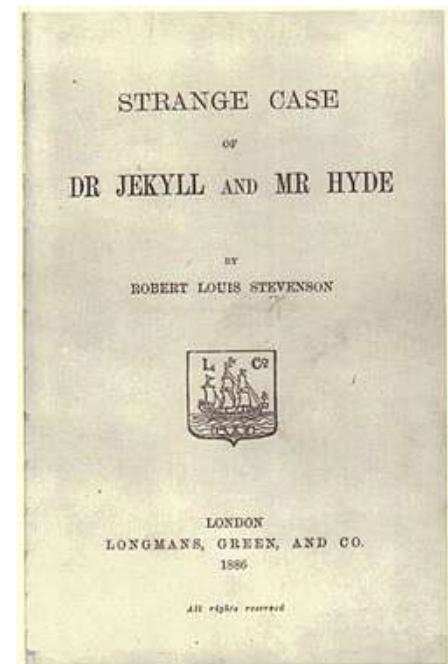
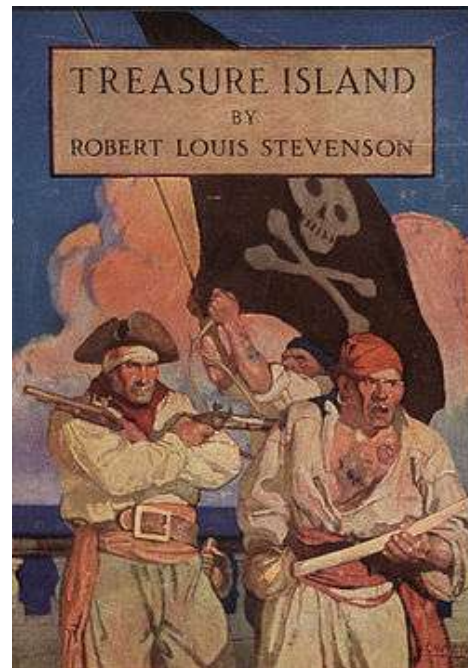


Then, he met a group of students who praised atheism and one day, he announced to his father that he didn't have the faith any more. This announcement created a familial scandal and Robert Stevenson was obliged to move. He got married with Fanny Osbourne and then, he travelled across Belgium and France and started to write his first novel.



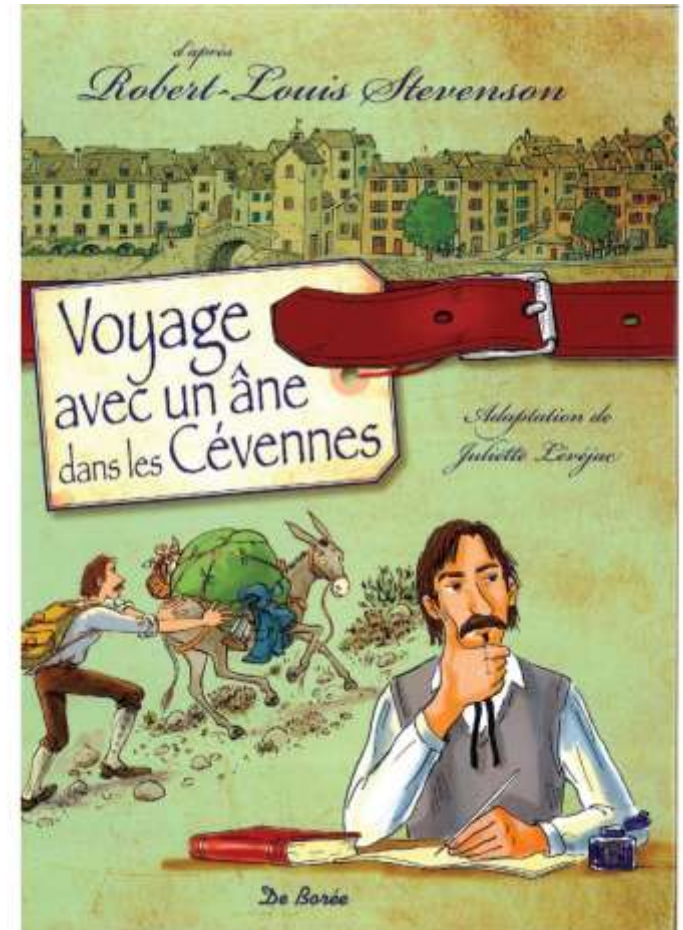
# A famous writer

He became a novel writer and his mainly famous three books are : *Travels with a Donkey in the Cévennes* , *Treasure Island* and *the Strange Case of Dr Jekyll and Mr Hyde*



# Travels with a Donkey in the Cévennes

*Travels with a Donkey in the Cévennes* deals with his trip in the Cévennes during the autumn of 1878. His trip started in the Monastier and he walked up to [Saint-Jean-du-Gard](#) (approximately 195 km) in only twelve days.





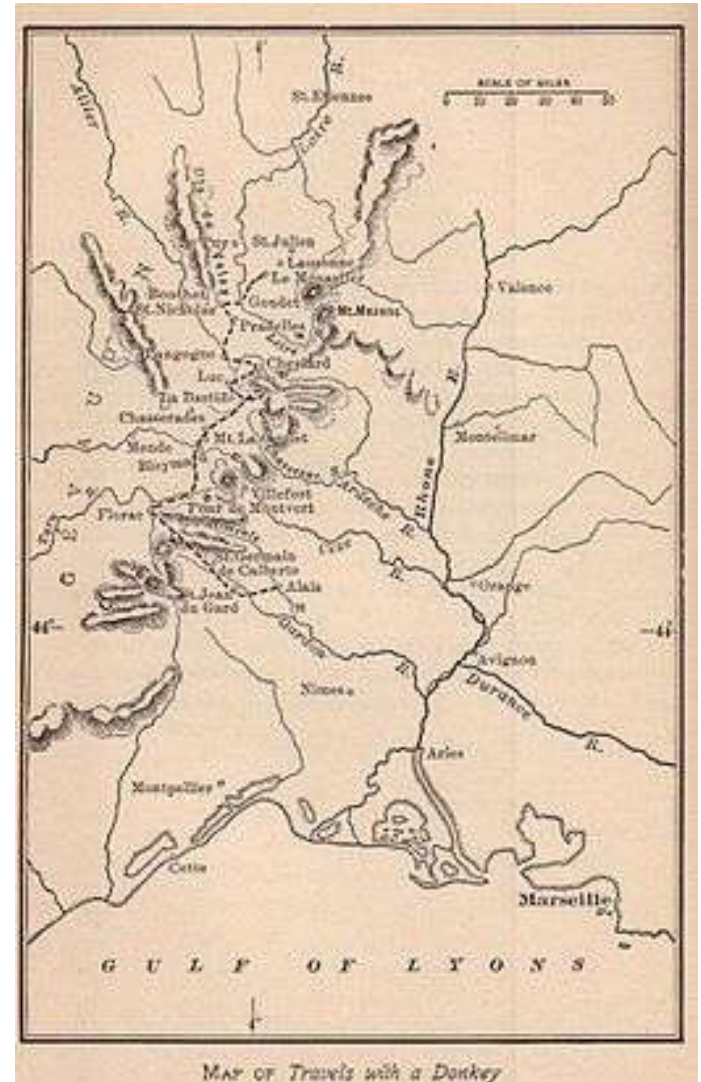
# Monastier sur Gazeille

Thanks to this famous book, Stevenson has become a really important figure for the Monastier which he describes as a really good little city with very open-minded inhabitants



# GR 70 / Le chemin de Stevenson

It's actually a long distance footpath of 225 kilometers which follows approximatively the path that Stevenson's taken. It passes through the Haute-Loire, the Lozère and the Gard 'départements' in a north-south direction.



# References :

- [https://fr.wikipedia.org/wiki/Robert Louis Stevenson](https://fr.wikipedia.org/wiki/Robert_Louis_Stevenson)
- <http://le.monastier43.free.fr/randonnee-stevenson.htm>
- [https://fr.wikipedia.org/wiki/Chemin de Stevenson](https://fr.wikipedia.org/wiki/Chemin_de_Stevenson)